

ROSE SHOW

SPONSORED BY THE

HOUSTON ROSE SOCIETY

SATURDAY

November 2, 2013

**St. Andrews Episcopal Church
1819 Heights Blvd. at 19th St.**

HOUSTON ROSE SOCIETY SHOW COMMITTEE

Show Chairman.....	Dan Lawlor
Classification.....	Donald Burger
Placement (Horticulture).....	Mary Bahn
Judges.....	Robin Hough
Judges/Exhibitors Coffee.....	Susan Kelly
Clerks.....	Susan Smith
Trophies.....	Mary Fulgham
Tally.....	Elisabeth Duhon
Calligraphy.....	Patsy Williams
Educational Information.....	Manning Correia
Treasurer.....	Gaye Hammond
Publicity.....	Mary Bahn
Show Schedule.....	Patsy Williams
.....	Robin Hough
Class Identification Cards.....	Patsy Williams
Fragrance Table.....	Volunteers

RULES FOR THE SHOW

Entries will be accepted from 7:00 am to 9:30 am, Saturday, November 2, 2013. Preparation area opens 6:00 am. **NO ENTRIES WILL BE ACCEPTED AFTER THE 9:30 am DEADLINE.** Judging will begin promptly at 10:00 am. The show will open to the public after judging is completed and until approximately 4:00 pm.

1. The show will be governed by the standard rules and regulations of the American Rose Society.
2. The show is open to all amateur rose growers who are paid, current members of the American Rose Society or any Affiliated or Associated Rose Society.
3. All exhibitors **MUST** register (using forms supplied) with the Show Committee at the Classification table when making initial entry.
4. Only one exhibitor, or team, per garden may enter. All entries must have been grown outdoors by the exhibitor.
5. Only one entry per exhibitor of each named variety allowed in each specimen class and one entry per exhibitor in each Challenge Class (Exception: Class 21 - Hybridizer).
6. Two specimens of the same variety in the same specimen class, or two entries per class in any Challenge Class, entered by the same exhibitor automatically disqualifies both entries (See rule 5 for exception).
7. Standard American Rose Society entry tags and uniform containers (except where noted) will be furnished by Show Committee. English boxes, brandy snifters and special containers for specified classes calling for collections will be furnished on a first come basis.
8. Both top and bottom portions of entry tags must be completed. Responsibility for proper identification and classification lies totally with the exhibitor.
9. Exhibitor must mark, fold and secure tag for each entry. Failure to submit a properly marked, folded and secured tag may disqualify exhibit.
10. Foliage shall be exhibited as naturally grown. Cleaning of foliage is encouraged, but no oil, dressing or artificial treatment is allowed.
11. Clear plastic wrap, aluminum foil or green styrofoam wedges are permitted in base of vase necks to support specimen stems. NO other material is to be used for this purpose.

12. During placement, only the Placement Committee will be permitted in the show area, with the following exceptions:

- Artistic arrangements (Division II) must be placed by exhibitor.
- Exhibitors entering Challenge Classes (Div. I, Section D-E) should place their own entries since, according to the judging standards, the overall appearance of the exhibit is judged, as well as the horticultural merit. The exhibitor may be assisted by a member of the Placement Committee and must leave the show floor as soon as his exhibit is placed to his satisfaction. No one will remain after 9:30 am except the Show Committee.

13. Only judges, clerks and the Show Chairman will be allowed in the immediate show area during judging.

14. First, second, third and fourth place designations will be awarded in each class where warranted, but judges may withhold any of these at their discretion. Trophies and awards will be given to first place winners only. Decision of the judges is final.

15. Disqualifications by judges will occur when any entry is as follows:

- (a) Misnamed, improperly named, misclassified, misplaced mislabeled or unlabeled.
- (b) Stem-on-stem (Exception: Old Garden Roses may be shown stem-on-stem. One bloom per stem Hybrid Perpetuals, Teas and Noisettes are not included in this exception).
- (c) Presence of foreign substance applied to foliage, stem or bloom to enhance appearance of specimen.
- (d) Side bud(s) on a specimen that must be disbudded.
- (e) A specimen in violation of the ARS rules or local society rules applying to this show.
- (f) Improperly named roses: Any rose that has been entered with a name that has not been recognized by the American Rose Society. Names may be verified in the following official sources: latest editions of *Modern Roses*, *Official List of Approved Exhibition Names for Exhibitors & Judges*, *Handbook for Selecting Roses*, The Rose Registration column of the *American Rose* magazine, and recent registrations on the ARS website. *The CRL* may be used for reference only.
- (g) The appearance of the exhibitor's name in any location other than the designated place on the entry tag.

16. Any questions concerning the show schedule will be clarified and decided by the Show Chairman, and all decisions are final.

17. Judges Challenge Classes (Class 30 and 36) are open **ONLY** to rose judges who are judging in this show.

18. SCALE OF POINTS FOR JUDGING SPECIMEN

Form	25
Color	20
Substance	15
Stem & Foliage	20
Size	10
Balance & Proportion	<u>10</u>
Total	100

19. All perpetual trophies are property of the Houston Rose Society. Winners of revolving trophies must sign a register assuring safe and careful custody, and agreeing to return revolving trophies to Show Chairman prior to the next show.

20. No exhibit, ribbon or award may be removed until after 4:00 pm, Saturday, November 2nd (Exception: the Show Committee reserves the right to remove from the show area any entry that becomes wilted or unattractive).

21. Trophies and awards must be picked up at the close of the show on Saturday at 4:00 pm. Award recipients **MUST** make prior arrangements with the Trophy committee if other arrangements are necessary.

22. Your participation as an exhibitor is welcomed. All care will be given to safeguard exhibits, but neither the ARS, the Houston Rose Society nor the Church will be responsible for the loss of or damage neither to entries or property, nor for injuries to persons not resulting from the direct act of their respective

agents. Liability of any nature is hereby disclaimed. All Roses entered in this show will become the property of the Houston Rose Society.

DIVISION I - HORTICULTURE

ALPHABETICAL SHOW SCHEDULE CLARIFICATION

Roses will be placed on exhibit table in alphabetical order in each general class. General classes will be expanded to create a subclass for each variety entered. Since each separate variety will constitute a subclass, a rose or roses entered in each separate subclass will be judged against the merits of that variety.

For example: The following roses beginning with the letter A are entered in Class 1 (hybrid teas and grandifloras): Alabama, Alleluia, Allspice, Aquarius, Arizona, Avon, Azure Sea, etc. EACH variety will be judged on its own merits and will be awarded accordingly. Even though **ONLY ONE** rose of the variety Alabama, for example, might be entered, it will be judged on its own merit and could receive a first place award.

The same alphabetical order and creation of a separate sub-class for each variety will be followed for all general classes calling for specimen roses.

SPECIAL AWARDS

In addition to the awards listed for each class, the following will be awarded for Division I, Horticulture.

- **Best of Show - Horticulture**

Awarded to the best entry in Division I, determined by consensus of the judging team.

Keeper Trophy

- **Royal Court**

The Queen, King, Princess and Court will be selected through balloting by all members of the Judging Team. The Standard Royal Court represents, by consensus of the judging team, the best standard one bloom-per-stem, naturally grown or disbudded specimen, to include Hybrid Teas, Grandifloras (Single Hybrid Teas, 4-8 petals, one bloom to a stem could be best specimen in show, but not Queen of Show), Climbing Hybrid Teas and Climbing Sports of these types, first place awards in Class 1 (one-bloom-per-stem) and Class 17 shall be considered. The Miniature Royal Court represents the best entries in Class 12 or Class 19 (Novice Miniature).

Keeper Trophy: Queen King, Princess and Court of Honor

Certificate: ARS Gold, Silver and Bronze

- **Sweepstakes Keeper Trophies**

Awarded to the individual exhibitors with the most first place awards in either Standard or Miniature Horticultural Classes in Division I.

Standard Sweepstakes Keeper Trophy

ARS Standard Sweepstakes Certificate

Miniature Sweepstakes Keeper Trophy

ARS Mini Sweepstakes Certificate.

SECTION A - STANDARD SPECIMEN ROSES

Class 1 **Keeper Trophies**
HYBRID TEAS or GRANDIFLORAS and their climbing counterparts, one bloom per stem, no side buds.

Certificates: ARS Gold, Silver and Bronze Medal Certificates

Keeper Trophies: Queen, King, Princess and Court

Class 2
FULLY OPEN HYBRID TEAS or GRANDIFLORAS, one bloom per stem, no side buds, STAMENS MUST SHOW

Certificate: ARS Best Hybrid Tea Open Bloom

Class 3 **Keeper Trophy**
SINGLE SPECIMEN ROSES, 4 to 8 petals, one bloom per stem, no side buds, any cultivar (excluding miniatures).

Class 4
HYBRID TEAS or GRANDIFLORAS and their climbing counterparts, multiple blooms (3 or more) per stem.

Certificate: ARS Best Hybrid Tea Spray OR

ARS Best Grandiflora Spray

Class 5
CLIMBING varieties, not sports of bush varieties, naturally grown.

Certificate: ARS Best Climber

Class 6
FLORIBUNDAS, one bloom per stem, no side buds.

Certificate: ARS Best One-Bloom-Per Stem Floribunda

Class 7
FLORIBUNDA, multiple blooms (3 or more) per stem.

Certificate: ARS Best Floribunda Spray

Class 8
POLYANTHAS, multiple blooms (3 or more) per stem.

Certificate: ARS Best Polyantha Spray

Class 9
SHRUB ROSES to include: Hybrid Musks, Rugosas, Hybrid Rugosas, any other shrub rose. These may be exhibited with side buds or disbudded, but can be only one stem of bloom(s).

Certificate: ARS Best Shrub Rose

Class 10
OLD GARDEN ROSES to include, Albas, Centifolias, Bourbons, Damasks, Autumn Damasks, Portlands, Gallicas, Hybrid Perpetuals, Mosses, Noisettes, Teas, Species, and any other old garden rose introduced PRIOR to 1867. These may be exhibited with side buds or disbudded, but can be only one stem of bloom(s). All entries should be named, registered and properly exhibited for the variety. Date of introduction, MUST be shown on upper right corner of entry tag.

Certificate: ARS Dowager Queen Certificate

Class 11
OLD GARDEN ROSES to include, Albas, Centifolias, Bourbons, Damasks, Autumn Damasks, Portlands, Gallicas, Hybrid Perpetuals, Mosses, Noisettes, Teas, Species and any other Old Garden Roses introduced AFTER 1866, or those with UNKNOWN DATE OF INTRODUCTION. These may be exhibited with side buds or disbudded, but can be only one stem of bloom(s). All entries should be named, registered and properly exhibited for the variety. Date of introduction, if known, MUST be shown on upper right corner of entry tag.

Certificate: ARS Victorian Rose Certificate

SECTION B - MINIATURE SPECIMEN ROSES

Class 12 **Keeper Trophies**
MINIATURE ROSES, bush and climbing types, one bloom per stem, no side buds.

Certificates: ARS Miniature Gold, Silver and Bronze Medal

Keeper Trophies: Queen, King, Princess and court of three.

Class 13 **Keeper Trophies**
MINI-FLORA ROSES, bush and climbing types, one bloom per stem, no side buds.

Certificates: ARS MiniFlora Gold, Silver and Bronze Medal

Keeper Trophies: Queen, King, Princess and court of three.

Class 14

MINIATURE/MINIFLORA ROSE SPRAYS, bush and climbing types, multiple blooms (3 or more) per stem, no side buds.

Certificate: *ARS Best Miniature Spray*

Class 15

FULLY OPEN MINIATURE/MINIFLORA roses, one bloom per stem, no side buds. STAMENS MUST SHOW.

Certificate: *ARS Best Open Miniature*

Class 16

SINGLE MINIATURE/MINIFLORA roses, 4 to 8 petals, one bloom per stem, no side buds.

Certificate: *ARS Best Single Miniature*

SECTION C - NOVICE & YOUTH

Open only to rose exhibitors who have never been awarded a first place in the horticulture division of an accredited rose show. (The monthly Grand Prix is not an accredited show). Exhibitors may enter Novice and regular competitive classes, but may not enter the same variety in both classes.

First Place winners in Class 17 and 19 are eligible to compete for ARS Gold, Silver and Bronze Medal Certificates and for Queen, King, Princess and Court of Honor Trophies.

The best specimen Blue Ribbon winner in **Classes 17, 18 and 19** will be eligible to win the:

NOVICE KEEPER TROPHY.

Class 17

HYBRID TEAS or GRANDIFLORAS, one bloom per stem, no side buds.

Class 18

FLORIBUNDAS or POLYANTHAS, multiple blooms (3 or more) per stem, or one bloom per stem.

Class 19

MINIATURE or MINI-FLORA ROSES, bush and climbing types, one bloom per stem, no side buds.

Class 20**Keeper Trophy**

YOUTH AWARD, an entry, any type of roses (standard or mini), grown and exhibited by a young person under 16 years of age.

Certificate: *HRS Best Youth Exhibitor*

SECTION D - HYBRIDIZER

Hybridizers may enter as many seedlings as desired. The best specimen winner in Class 21 will be eligible to win the **Randy Keen Seedling Trophy.**

Eligible for Perpetual Trophy: Randy Keen Seedling Trophy
Eligible for ARS Best Seedling Certificate

Class 21

HYBRIDIZER CHALLENGE - One stem of any unregistered seedling or sport, hybridized or discovered) by the exhibitor. Parentage must be identified on entry tag.

SECTION E

CHALLENGE CLASSES AND COLLECTIONS

Class 22**Keeper Trophy**

EARTHKIND™ ROSES: One stem of bloom or blooms, exhibited naturally grown or disbudded, shown at exhibition stage or fully open. This class is only open to those roses which have been officially designated by Texas A&M University as EarthKind™ ROSES.

Class 23**Keeper Trophy**

J. M. STROUD COLLECTION - Five (5) Hybrid Teas or Grandifloras, one bloom per stem, no side buds, each a different variety, correctly identified, displayed in separate containers.

Class 24**Keeper Trophy**

TRIANGLE OF ROSES: Three (3) specimens, each cultivar to be correctly identified and displayed in separate containers.

- One Hybrid Tea at exhibition stage, no side buds.
- One Hybrid Tea fully open (stamens must show), no side buds.
- One Floribunda spray (3 or more blooms per stem).

Class 25**Keeper Trophy**

STAGES OF BLOOM: Three (3) Hybrid Teas or Grandifloras or Floribundas, ALL three specimens must be the same variety, showing the three stages of development. Correctly named and displayed in separate containers.

- One, a bud
- One, approximately 1/2 open or in its most perfect phase of possible beauty
- One, fully open bloom (Stamens must show)

Class 26**Keeper Trophy**

MATCHED PAIR - Two (2) Hybrid Tea, Grandiflora or Floribunda, same variety, one bloom per stem, no side buds, displayed in separate containers.

Class 27**Keeper Trophy**

ROSE IN A BOWL - One rose, any standard variety, properly identified, displayed in brandy snifter furnished by Show Committee. No foliage to show. Stage of opening to be determined by the exhibitor.

Certificate: *ARS Best Bowl*

(Rose Collections in a single vase)

Scale of points (Class 28, 29, 31) 40, Overall Beauty; 30, Balance & Proportion; 30, Condition = 100 Total)

Class 28**Keeper Trophy**

OLD GARDEN ROSE COLLECTION - An entry of five (5) or more stems of Old Garden Roses with blooms, buds and/or hips, using not less than three varieties, with blooms predominating. All roses must be correctly identified. Container to be furnished by exhibitor.

Class 29**Keeper Trophy**

FRAGRANT ROSES: Open to Hybrid Teas, Grandifloras, Floribundas and Old Garden Roses, shown in exhibition stage or fully open. This class will be judged by the public from the end of ARS Judging until 3:00 pm, primarily for fragrance, but **overall appearance must be show quality.**

Class 30**Keeper Trophy**

JUDGES' CHALLENGE - STANDARD - Three (3) Hybrid Teas, Grandifloras, or Floribundas, one bloom per stem, no side buds, each a different variety, correctly identified and displayed in separate containers. Open only to Accredited and Apprentice Judges judging this show.

Certificate: *ARS Judges Award*

Class 31**Keeper Trophy**

MINIATURE or MINIFLORA ROSE IN A BOWL - One (1) Miniature rose, correctly identified, displayed in a brandy snifter furnished by Show Committee. No foliage to show. Stage of opening to be determined by exhibitor.

Certificate: *ARS Best Miniature Rose Bowl*

Class 32 **Keeper Trophy**
MINIATURE MATCHED PAIR - Two (2) Miniature or Mini-Flora roses, same variety, one bloom per stem, displayed in separate containers. Stage of opening to be determined by the exhibitor.

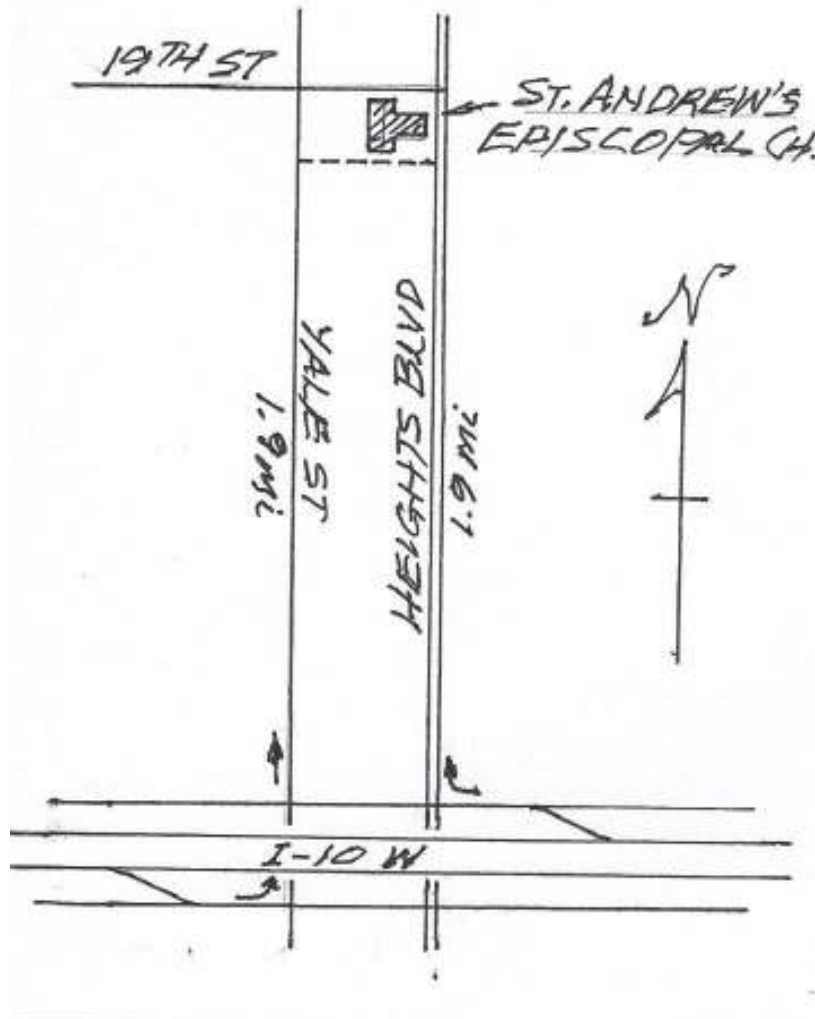
Class 33 **Keeper Trophy**
COLLECTION OF SIX - Six (6) Miniature or MiniFlora roses, different varieties, one bloom per stem, no side buds, properly identified, shown in separate containers.

Class 34 **Keeper Trophy**
STAGES OF BLOOM - MINIATURE - Three (3) Miniature or MiniFlora roses of one variety, one bloom per stem, no side buds, in different stages of opening, shown in separate containers. Stages to be 1/4 to 1/3 open, 2/3 open, and fully open. STAMENS MUST SHOW.

Class 35 **Keeper Trophy**
TRIANGLE OF MINIATURES - Three (3) Miniature or MiniFlora, one or more varieties, one, at exhibition stage, no side buds; one, a spray with at least three blooms; one, fully open without side buds. Displayed in separate containers, correctly identified.

Class 36 **Keeper Trophy**
JUDGES' CHALLENGE - MINIATURE - Three (3) Miniature or MiniFlora each a different variety, one bloom per stem, no side buds, correctly identified, shown in separate containers. Open only to Accredited & Apprentice Judges judging this show.

Certificate: ARS Judges Award



Map to St. Andrews Episcopal Church